

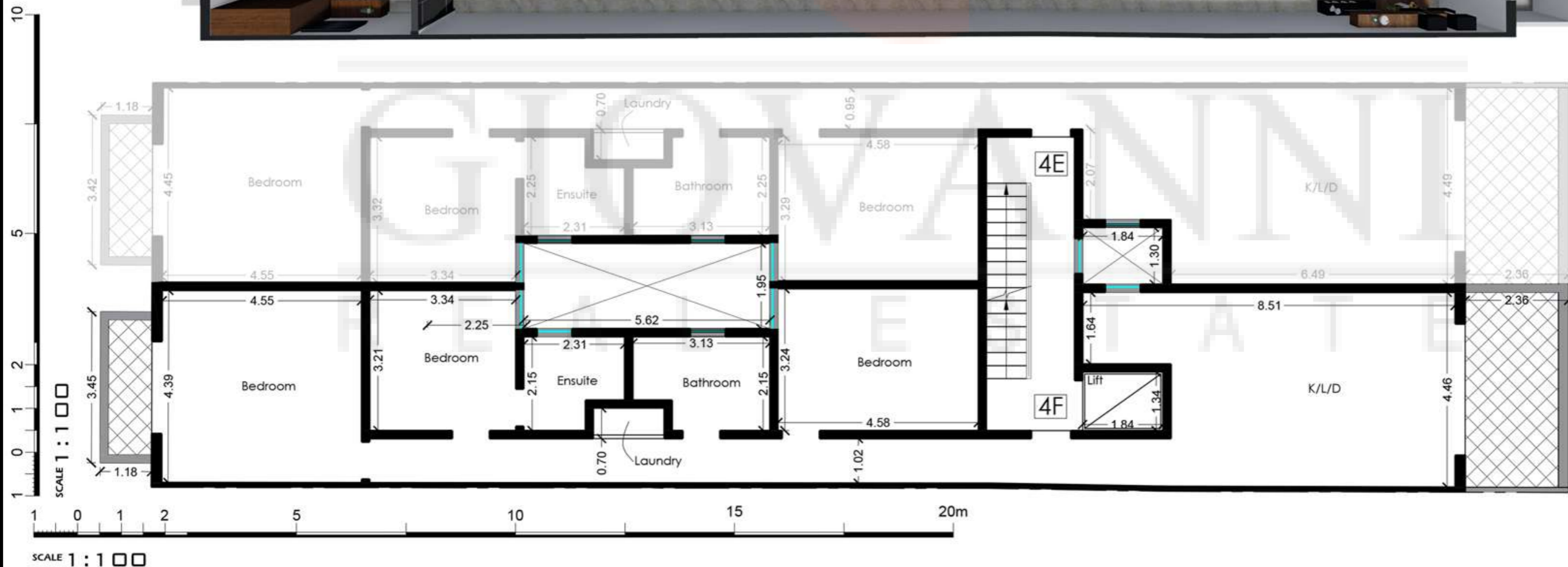
Level 7
Level 6
Level 5
Level 4
Level 3
Level 2
Level 1

Apartment 4E

Fourth Floor (Level 5)

Artistic Impression Only
Beams may protrude with
minimum headroom of 2.1m

Internal : 124 m² External : 15 m²
Total Area : 139 m² circa

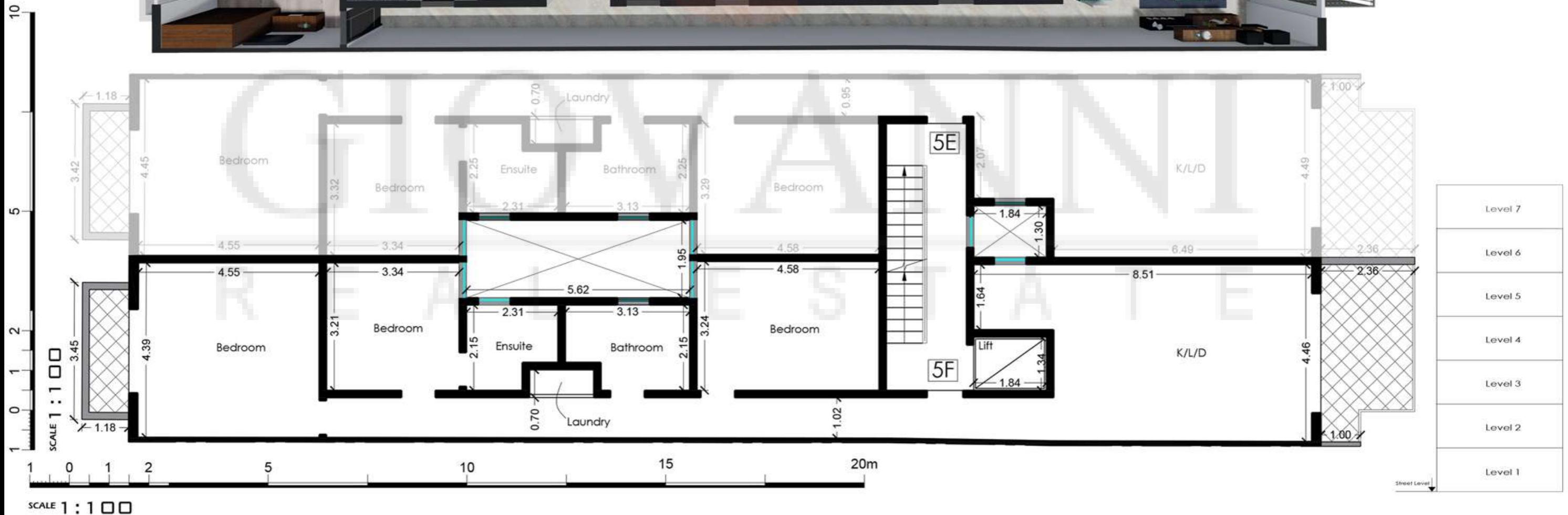


Level 7
Level 6
Level 5
Level 4
Level 3
Level 2
Level 1

Apartment 4F Fourth Floor (Level 5)

Artistic Impression Only
Beams may protrude with
minimum headroom of 2.1m

Internal : 124 m² External : 15 m²
Total Area : 139 m² circa



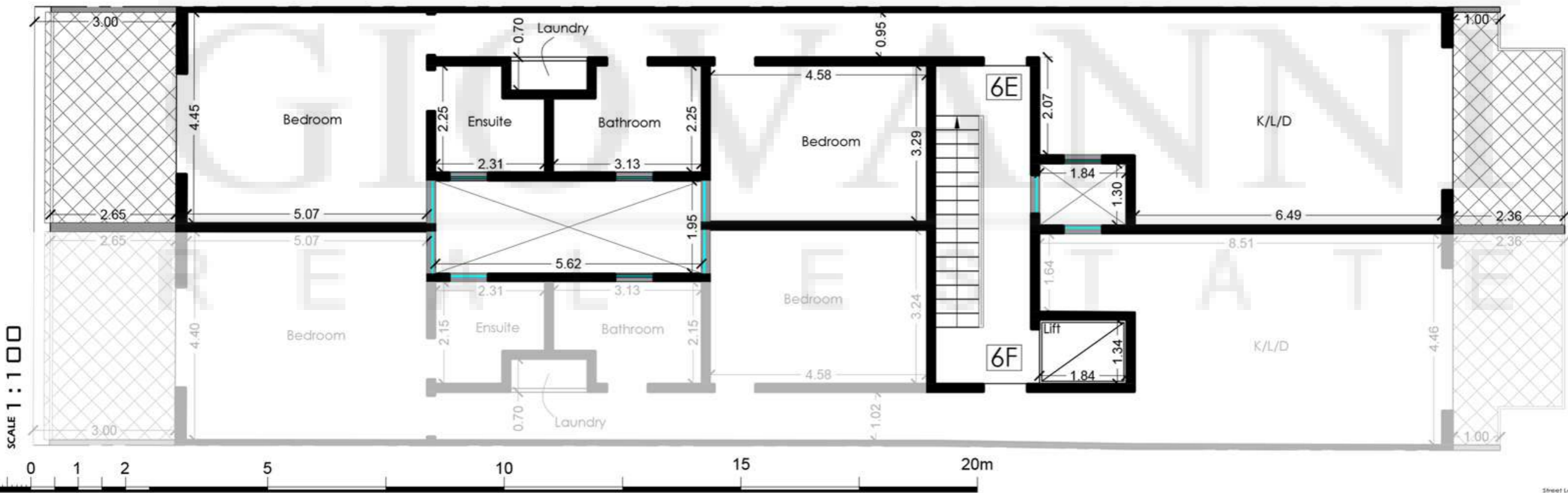
Apartment 5F
Fifth Floor (Level 6)

Artistic Impression Only
Beams may protrude with
minimum headroom of 2.1m

Internal : 124 m² External : 13 m²
Total Area : 137 m² circa



10
5
2
1
0
1



SCALE 1 : 100

SCALE 1 : 100

Level 7
Level 6
Level 5
Level 4
Level 3
Level 2
Level 1

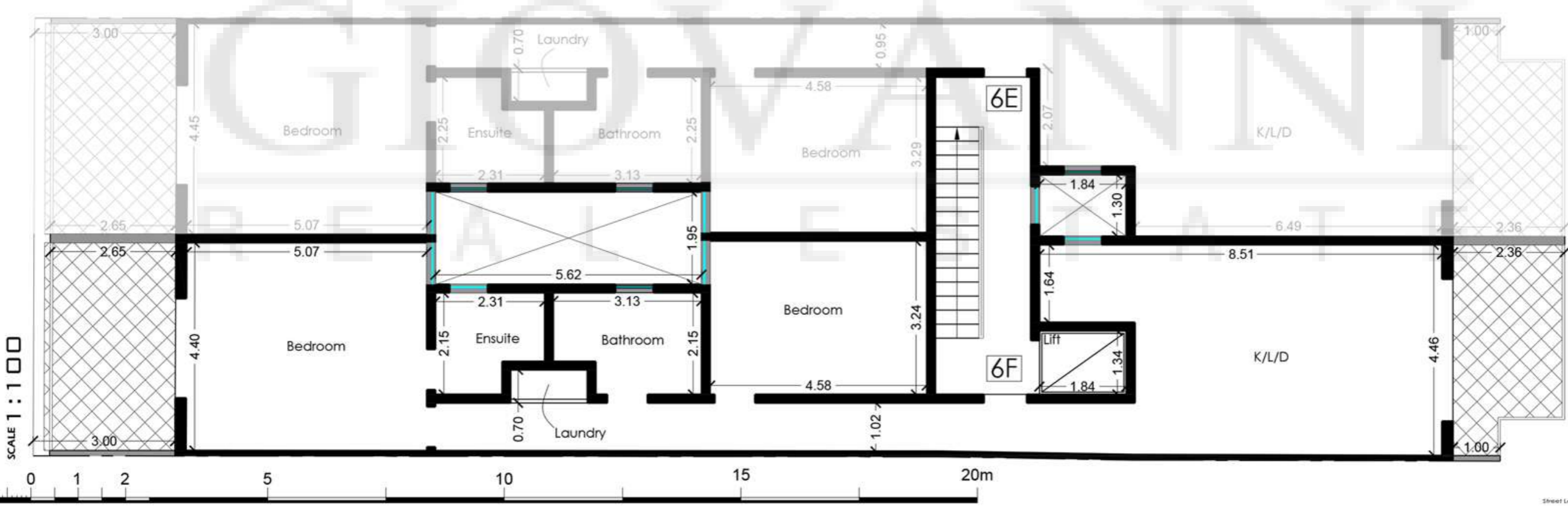
Penthouse 6E
Sixth Floor (Level 7)

Artistic Impression Only
Beams may protrude with
minimum headroom of 2.1m

Internal : 110 m² External : 22 m²
Total Area : 132 m² circa



10
5
2
1
0
1



SCALE 1 : 100

SCALE 1 : 100

Level 7
Level 6
Level 5
Level 4
Level 3
Level 2
Level 1

Penthouse 6F
Sixth Floor (Level 7)

Artistic Impression Only
Beams may protrude with
minimum headroom of 2.1m

Internal : 110 m² External : 22 m²
Total Area : 132 m² circa