



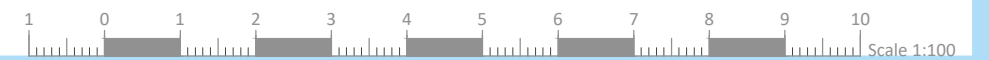
FACADE MATERIALS:

1. Franka stone unpainted;
2. timber aperture painted as per DC 2015 G52;
3. Wrought iron railings painted dark grey.

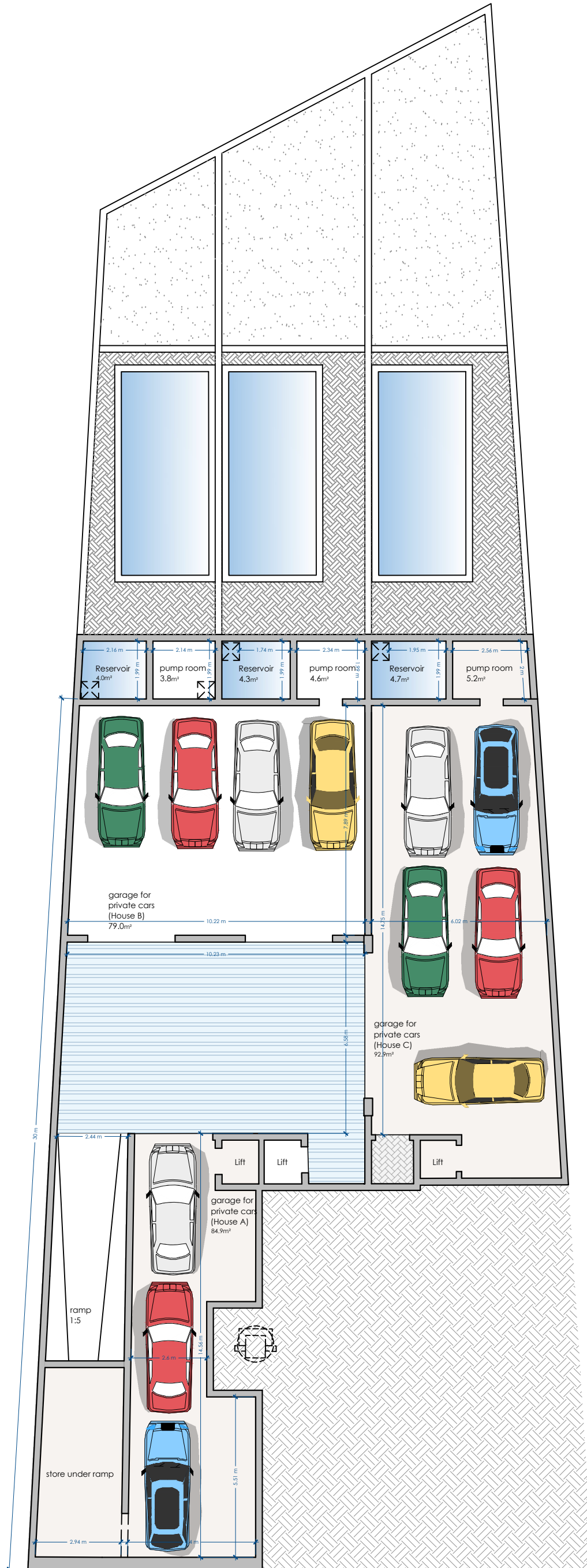
FRONT ELEVATION

PROPOSED

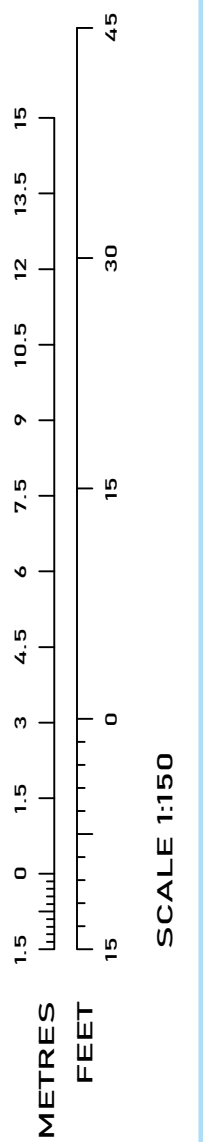
SCALE 1:100



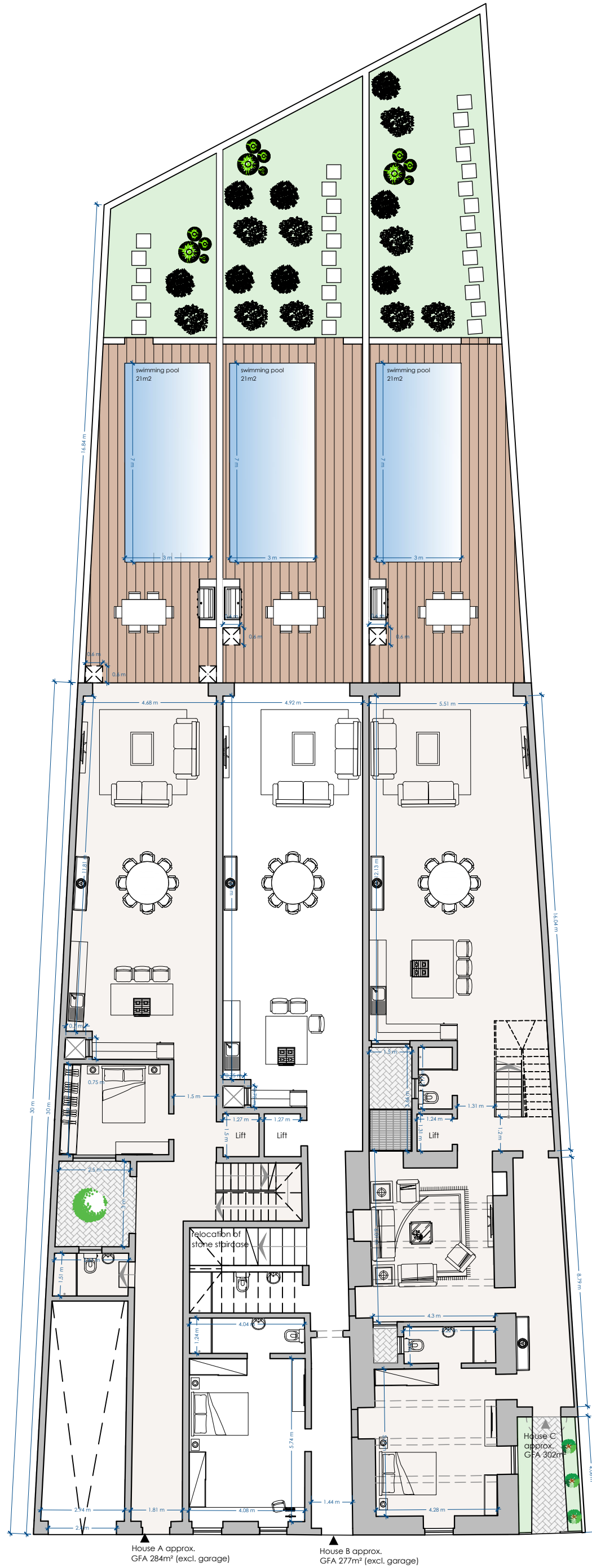
UNIT	INTERNAL	EXTERNAL	TOTAL
HOUSE A	99 sqm	/	99 sqm
HOUSE B	96.3 sqm	/	96.3 sqm
HOUSE C	114 sqm	3.4 sqm	114 sqm



BASEMENT LEVEL
PROPOSED SCALE 1:150

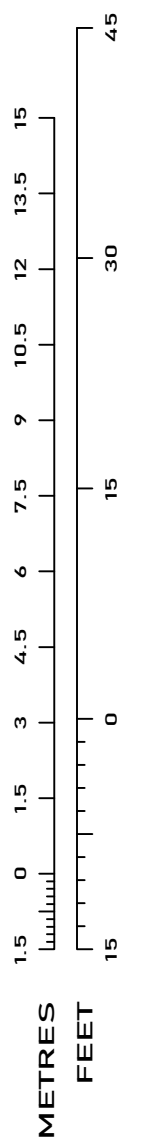


UNIT	INTERNAL	EXTERNAL	TOTAL
HOUSE A	131.8 sqm	85.6 sqm	217.4 sqm
HOUSE B	151.7 sqm	103.9 sqm	255.6 sqm
HOUSE C	189.9 sqm	126.8 sqm	316.7 sqm



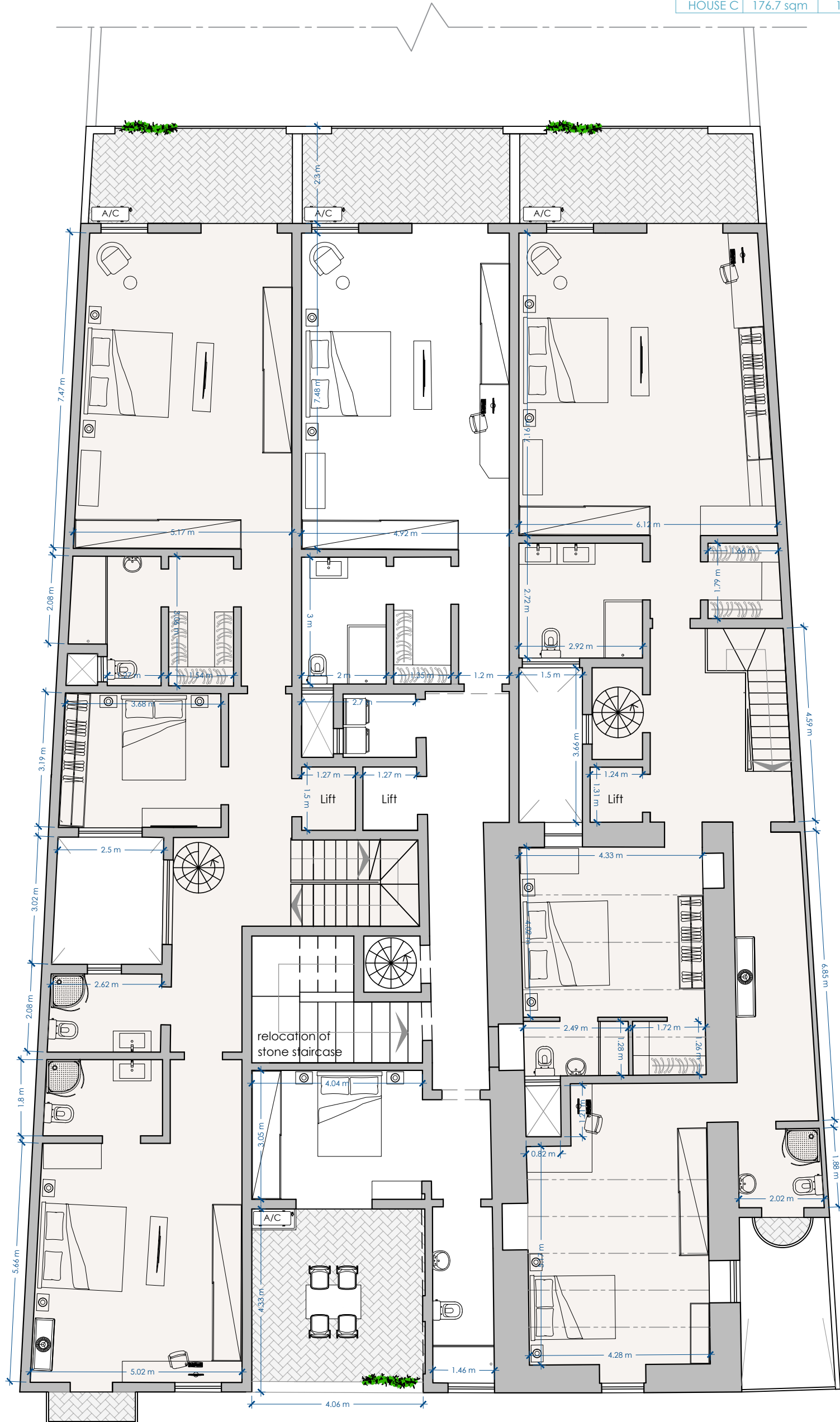
GROUND FLOOR
PROPOSED

SCALE 1:150



SCALE 1:150

UNIT	INTERNAL	EXTERNAL	TOTAL
HOUSE A	145.9 sqm	13 sqm	158.9 sqm
HOUSE B	121.6 sqm	30 sqm	151.6 sqm
HOUSE C	176.7 sqm	14 sqm	190.7 sqm



FIRST FLOOR PROPOSED

SCALE 1:100

